



Kawasaki

Let the good times roll

2022 MOTORCYCLE RANGE





Kawasaki

Let the good times roll



SUPERSPORT

Ninja ZX-10RR



Lime Green GN2

MULTI WORLD SUPERBIKE CHAMPIONSHIP WINNER

The Ninja ZX-10RR has what it takes to win: The limited-production (500 units worldwide) trackfocused single-seat enhances the potential of the base model with further engine and chassis modifications, including a higher rev limit, Pankl titanium connecting rods and lightweight pistons. Aerodynamic body with integrated winglets, LED headlights, TFT colour instrumentation, with Smartphone connectivity plus updates derived from Kawasaki Racing Team World Superbike expertise.

QUICK SHIFTER, UP & DOWN

SHOWA SUSPENSION - FRONT & REAR

BREMBO DISCS & M50 MONOBLOC CALIPERS

PANKL HIGH-PERFORMANCE PARTS

MARCHESINI FORGED WHEELS

IMU-ENHANCED ELECTRONICS

ENGINE TYPE	4-Stroke, in-line 4 cylinder
DISPLACEMENT	998 cm ³
POWER / TORQUE	150.0 kW / 111.8 N.m
TRANSMISSION	6-Speed
CURB MASS	207 kg*
SEAT HEIGHT	835 mm

L X W X H	2,085 x 750 x 1,185mm
FUEL CAPACITY	17 L
BRAKES (F)	Dual 330 mm Brembo disc
BRAKES (R)	Single 220 mm Disc
TYRE (F)	120/70ZR17M/C (58W)
TYRE (R)	190/55ZR17M/C (75W)

Model Code: ZX1002N

 **Kawasaki**

SUPERSPORT

Ninja ZX10R



Lime Green with
Ebony GN1



Metallic Matte Graphene Steel Gray with Metallic Diablo Black GY1

NINJA LEGENDARY HIGH PERFORMANCE

Built on proven performance from 6-World Championships. Technology delivering unrivalled agility, control and handling, next-level electronics, race-developed suspension & brake componentry, new chassis geometry and aerodynamic performance result in a rider centric design that continues to be the choice for premium road and track riding.

AERODYNAMIC STYLING + WINGLETS

INTEGRATED RIDER MODES

FULL COLOUR TFT SCREEN

SPORT-KAWASAKI TRACTION CONTROL (S-KTRC)

KAWASAKI QUICK SHIFTER (KQS)

ELECTRONIC CRUISE CONTROL

ENGINE TYPE	4-Stroke, in-line 4 cylinder
DISPLACEMENT	998 cm ³
POWER / TORQUE	149.3 kW / 114.9 N.m
TRANSMISSION	6-speed
CURB MASS	207 kg*
SEAT HEIGHT	835 mm

L X W X H	2,085 x 750 x 1,185 mm
FUEL CAPACITY	17 L
BRAKES (F)	Dual 330mm Brembo disc
BRAKES (R)	Single 220mm disc
TYRE (F)	120/70ZR17M/C (58W)
TYRE (R)	190/55ZR17M/C (75W)

Model Code: ZX1002L

 **Kawasaki**

SPORTS TOURER

Ninja

H2™ SX



Emerald Blazed Green with Metallic Diablo Black GN1

FRONT
RADAR
SENSOR



ACC
Adaptive Cruise Control



ESS
Emergency Stop Signal



SPIN
Smartphone Based
Infotainment App



BSD
Blind Spot Detection



VHA
Vehicle Hold Assist



ACC
Tyre Pressure
Monitoring System



KIPASS
Kawasaki Intelligent Proximity
Activation Start System

ENGINEERED TO BE FREE

The NEW Kawasaki Ninja H2 SX - Supercharge your journey, more technology, comfort and convenience for Kawasaki's unique supercharged sport tourer. From the Japanese company known for firsts - the only massed-production motorcycle to be fitted with Bosch's Advanced Rider Assistance System, (ARAS) provides real world benefits including adaptive cruise control and blind-spot detection. Integrated into the new 6.5" colour TFT instrumentation is Kawasaki's SPIN Infotainment system.

TYRE PRESSURE MONITORING SYSTEM (TPMS)

VEHICLE HOLD ASSIST (VHA)

GRIP HEATERS AS STANDARD

FORWARD COLLISION WARNING

KIPASS KEY FOB

BLIND SPOT DETECTION

ENGINE TYPE	Supercharged in-line 4 cylinder
DISPLACEMENT	998 cm ³
POWER / TORQUE	147.1 kW / 137.3 N.m
TRANSMISSION	6-speed
CURB MASS	266 kg*
SEAT HEIGHT	820 mm

L X W X H	2,178 x 790 x 1,260 mm
FUEL CAPACITY	19 L
BRAKES (F)	Dual 320mm Brembo discs
BRAKES (R)	Single 250mm disc
TYRE (F)	120/70ZR17M/C (58W)
TYRE (R)	190/55ZR17M/C (75W)

Model Code: ZX1002P

Kawasaki

HYPERSPORT

Ninja
H2



Mirror Coated Spark Black GY1

NINJA H2 BUILT BEYOND BELIEF

The Ninja H2 streetbike's supercharged engine creates unprecedented power for remarkable acceleration. The heavy growl of the boosted litre-class engine is a sound the streets won't soon forget. Paired with a multitude of high-performance components to ensure an unforgettably effortless, yet forceful experience.

STREET-LEGAL HYPERSPORT PERFORMANCE
KYB AOS-II FORK AND ÖHLINS TTX36 SHOCK
KAWASAKI TRACTION CONTROL (KTRC-9 MODES)
ALL LED LIGHTING
KAWASAKI QUICK SHIFTER
SMART PHONE CONNECTIVITY

ENGINE TYPE	Supercharged in-line 4 cylinder
DISPLACEMENT	998 cm ³
POWER / TORQUE	170.0 kW / 141.7 N.m
TRANSMISSION	6-speed
CURB MASS	238 kg*
SEAT HEIGHT	825 mm

L X W X H	2,085 x 770 x 1,225 mm
FUEL CAPACITY	17 L
BRAKES (F)	Dual 330 mm Brembo discs
BRAKES (R)	Single 250 mm disc
TYRE (F)	120/70ZR17M/C (58W)
TYRE (R)	200/55ZR17M/C (78W)

Model Code: ZX1002J

 **Kawasaki**

HYPERSPORT

Ninja
H2R



Mirror Coated Matte Spark Black GY3

NINJA H2R BUILT BEYOND BELIEF

Ninja H2R motorcycle goes beyond the boundaries of any other Kawasaki motorcycle. Born of unprecedented inter-company collaboration within the Kawasaki Heavy Industries, Ltd. (KHI) Group, the world's only limited production supercharged hypersport model represents the pinnacle of Kawasaki engineering, delivering astonishing acceleration and mind-bending top speed suitable only for closed courses.

CLOSED COURSE ONLY HYPERSPORT ①

HIGH PERFORMANCE RACING SUSPENSION

BREMBO STYLEMA BRAKE CALIPERS

LIGHT TRELLIS FRAME

KAWASAKI LAUNCH CONTROL

LIGHTWEIGHT CAST ALUMINIUM WHEELS

ENGINE TYPE	Supercharged in-line 4 cylinder
DISPLACEMENT	998 cm ³
POWER / TORQUE	228.0 kW / 165.0 N.m
TRANSMISSION	6-speed
CURB MASS	216 kg*
SEAT HEIGHT	830 mm

L X W X H	2,070 x 850 x 1,160 mm
FUEL CAPACITY	17 L
BRAKES (F)	Dual 330mm Brembo discs
BRAKES (R)	Single 250mm disc
TYRE (F)	120/600 R17
TYRE (R)	190/650 R17

Model Code: ZX1000Y

 **Kawasaki**

SUPERSPORT

Ninja ZX-14R



Pearl Storm Gray with Metallic Diablo Black GY1

KING OF THE QUARTER MILE

Renowned for its dominance at the drag strip. The Ninja ZX-14R is King of the Quarter Mile. An enormous 1441cc engine, premium onboard electronics and uncompromising refinement give the Ninja ZX-14R the ability to take on the track or the backroads with sophisticated ease.

OHLINS TTX39 SHOCK

BACK-TORQUE LIMITING SLIPPER CLUTCH

3-MODE KAWASAKI TRACTION CONTROL (KTRC)

BREMBO 4-PISTON M50 MONOBLOC CALIPERS

KAWASAKI TRACTION CONTROL

UNIQUE MONOCOQUE ALUMINIUM FRAME

ENGINE TYPE	4-Stroke, in-line 4 cylinder
DISPLACEMENT	1,441 cm ³
POWER / TORQUE	147.2 kW / 158.2 N.m
TRANSMISSION	6-speed
CURB MASS	269 kg*
SEAT HEIGHT	800 mm

L X W X H	2,170 x 770 x 1,170 mm
FUEL CAPACITY	22 L
BRAKES (F)	Dual 310 mm Brembo discs
BRAKES (R)	Single 250 mm disc
TYRE (F)	120/70ZR17M/C (58W)
TYRE (R)	190/50ZR17M/C (73W)

Model Code: ZX1400J

 **Kawasaki**

SPORT

Ninja

1000 SX



Ninja 1000 SX
Metallic Matte Graphene Steel
Gray with Metallic Diablo Black GY1

*Kawasaki Genuine Panniers available



Ninja 1000 SX
Emerald Blazed Green with Metallic Diablo Black GN1

BEST OF BOTH WORLDS

The Ninja 1000SX has character without compromise. Infused with the Ninja spirit craved by discerning solo sportsbike riders, the Ninja 1000SX takes the concept further with SX sport touring versatility to share with a fellow traveller. From traction control to cruise control, the Ninja 1000SX has the tech for the ride.

KQS KAWASAKI QUICK SHIFTER UP & DOWN
IMU-ENHANCED ELECTRONICS PACKAGE
KAWASAKI TRACTION CONTROL (KTRC)
KAWASAKI INTELLIGENT ANTI-LOCK BRAKE SYSTEM (KIBS)
ELECTRONIC CRUISE CONTROL
SMARTPHONE CONNECTIVITY

ENGINE TYPE	4-Stroke, in-line 4 cylinder
DISPLACEMENT	1,043 cm ³
POWER / TORQUE	104.5 kW / 111.0 N.m
TRANSMISSION	6-speed
CURB MASS	235 kg*
SEAT HEIGHT	835 mm

L X W X H	2,100 x 825 x 1,190 mm
FUEL CAPACITY	19 L
BRAKES (F)	Dual 300 mm petal disc
BRAKES (R)	Single 250 mm disc
TYRE (F)	120/70ZR17M/C (58W)
TYRE (R)	190/50ZR17M/C (73W)

Model Code: ZX1002K

 **Kawasaki**

SUPERSPORT

Ninja ZX-6R 636



Lime Green with Ebony GN1

RULE THE TRACK. RUN THE STREETS.

Legendary Ninja performance. The Ninja ZX-6R motorcycle boasts a potent 636cc engine, advanced electronics and a lightweight chassis. The “636” has been optimised for both street and the track, offering an exhilarating experience in a wide range of riding situations.

KAWASAKI QUICK SHIFTER (KQS)
ASSIST AND SLIPPER CLUTCH
TWIN LED HEADLIGHTS AND TAILLIGHT
BATTLAX HYPERSPORT S22 TYRES
TRACTION CONTROL AND POWER MODES
SHOWA SFF-BP FORKS

ENGINE TYPE	4-Stroke, in-line 4 cylinder
-------------	------------------------------

DISPLACEMENT	636 cm ³
--------------	---------------------

POWER / TORQUE	95.4 kW / 70.8 N.m
----------------	--------------------

TRANSMISSION	6-speed
--------------	---------

CURB MASS	196 kg
-----------	--------

SEAT HEIGHT	830 mm
-------------	--------

L X W X H	2,025 x 710 x 1,100 mm
-----------	------------------------

FUEL CAPACITY	17 L
---------------	------

BRAKES (F)	Dual 310 mm discs
------------	-------------------

BRAKES (R)	Single 220 mm disc
------------	--------------------

TYRE (F)	120/70ZR17M/C (58W)
----------	---------------------

TYRE (R)	180/55ZR17M/C (73W)
----------	---------------------

Model Code: ZX636G

 **Kawasaki**

SPORT

Ninja 650

LAMS APPROVED

Kawasaki
LEARNER
APPROVED



Metallic Matte
Graphene Gray GY1

Pearl Robotic White with Metallic Carbon Gray WT1

RIDE BOLD

Reinvigorated in 2020 to further embody Ninja sportbike lineage, the Ninja 650 motorcycle comes packed with a sporty 649cc engine, next-level technology advancements and sharp styling. Unmistakable sport performance is met with an upright riding position for exciting daily commutes, while a supreme level of attitude reminds you of its legendary heritage.

LOW SEAT HEIGHT

ASSIST & SLIPPER CLUTCH

BLUETOOTH SMARTPHONE CONNECTIVITY

TFT COLOUR INSTRUMENT PANEL

DUNLOP SPORTMAX ROADSPORT 2 TYRES

FLUSH-FIT WINDSHIELD AND UPPER COWL

ENGINE TYPE	4-Stroke parallel twin
DISPLACEMENT	649 cm ³
POWER / TORQUE	37.8 kW / 59.0 N.m
TRANSMISSION	6-speed
CURB MASS	192 kg*
SEAT HEIGHT	790 mm

L x W x H	2,055 x 740 x 1,145 mm
FUEL CAPACITY	15 L
BRAKES (F)	Dual 300 mm petal discs
BRAKES (R)	Single 220 mm petal disc
TYRE (F)	120/70ZR17M/C (58W)
TYRE (R)	160/60ZR17M/C (69W)

Model Code: EX650M

 **Kawasaki**

SPORT

Ninja 650

FULL POWER



Metallic Matte Graphene Gray GY1

RIDE BOLD

Built to embody Ninja sportbike lineage, the Ninja 650 motorcycle comes packed with a sporty 649cc engine, next-level technology and sharp styling. Unmistakable sport performance is met with an upright riding position for exciting daily commutes, while a supreme level of attitude reminds you of its legendary heritage.

LOW SEAT HEIGHT

ASSIST & SLIPPER CLUTCH

BLUETOOTH SMARTPHONE CONNECTIVITY

TFT COLOUR INSTRUMENT PANEL

DUNLOP SPORTMAX ROADSPORT 2 TYRES

FLUSH-FIT WINDSHIELD AND UPPER COWL

ENGINE TYPE	4-Stroke parallel twin
DISPLACEMENT	649 cm ³
POWER / TORQUE	50.2 kW / 66.0 N.m
TRANSMISSION	6-speed
CURB MASS	192 kg*
SEAT HEIGHT	790 mm

L x W x H	2,055 x 740 x 1,145 mm
FUEL CAPACITY	15 L
BRAKES (F)	Dual 300 mm petal discs
BRAKES (R)	Single 220 mm petal disc
TYRE (F)	120/70ZR17M/C (58W)
TYRE (R)	160/60ZR17M/C (69W)

Model Code: EX650M

 **Kawasaki**

SPORT

Ninja 400

LAMS APPROVED

Kawasaki
LEARNER
APPROVED


Ninja 400
 Metallic Carbon Gray with
 Metallic Flat Spark Black



Ninja 400 SE
 Metallic Magnetic Dark Gray
 with Metallic Spark Black

Ninja 400 SE KRT
 Lime Green with Ebony and Pearl Blizzard White GN1 - Kawasaki Racing Team

EVERYDAY EPIC SPORT RIDING

The Ninja 400 twin cylinder has the largest displacement engine in the category. Delivering smooth easy-to-use power for maximum rider confidence for both learners and experienced riders. Low seat height, assist and slipper clutch and ABS, make the Ninja 400 a fun and easy to ride motorcycle.

ASSIST & SLIPPER CLUTCH
LED HEADLIGHTS
LIGHTWEIGHT TRELLIS FRAME
MULTI-FUNCTION INSTRUMENTATION
UNI-TRACK REAR SUSPENSION
NIMBLE & AGILE HANDLING

ENGINE TYPE	4-stroke parallel twin
DISPLACEMENT	399 cm ³
POWER / TORQUE	33.4 kW / 38.0 N.m
TRANSMISSION	6-speed
CURB MASS	168 kg*
SEAT HEIGHT	785 mm

L x W x H	1,990 x 710 x 1,120 mm
FUEL CAPACITY	14 L
BRAKES (F)	Single 310 mm petal disc
BRAKES (R)	Single 220 mm petal disc
TYRE (F)	110/70R17 M/C 54H
TYRE (R)	150/60R17 M/C 66H

Model Code: EX400G

Kawasaki



H2



Metallic Diablo Black with Golden Blazed Green GN1

SUPERCHARGED Z

Z H2. Kawasaki's ultimate street fighter is centred on a balanced supercharged engine. Minimal body work and maximum attitude. Great power required next-level technology to harness supercharged output. Advanced rider support enable you to take to the streets with confidence.

KAWASAKI QUICK SHIFTER
BREMBO BRAKE CALIPERS
COLOUR TFT LCD SCREEN
SMARTPHONE CONNECTIVITY
INTEGRATED RIDING MODES
LAUNCH CONTROL MODE

ENGINE TYPE	Supercharged in-line 4 cylinder
DISPLACEMENT	998 cm ³
POWER / TORQUE	147.1kW / 137.0 N.m
TRANSMISSION	6-speed
CURB MASS	239 kg*
SEAT HEIGHT	830 mm

L x W x H	2,085 x 810 x 1,130 mm
FUEL CAPACITY	19 L
BRAKES (F)	Brembo 320 mm dual discs
BRAKES (R)	Single 260 mm disc
TYRE (F)	120/70 ZR17M/C (58W)
TYRE (R)	190/55 ZR17 M/C (75W)

Model Code: ZR1000K

Z1000



Metallic Matte Carbon Gray with Emerald Blazed Green GY1

SUPER NAKED THRILLS

The Z1000 strips off all unnecessary flourishes to boldly highlight the functionality of its parts. The sculpted bodywork was carefully crafted to bring the aggressive Z design to the next level. Its appearance and performance can be expressed by the word Sugomi.

INTOXICATING INTAKE HOWL

ASSIST AND SLIPPER CLUTCH

ALL LED LIGHTING

WIDE-SET FAT BAR

LIGHTWEIGHT WHEELS

SEPARATE FUNCTION FORK - BIG PISTON

ENGINE TYPE	4-stroke, in-line 4 cylinder
DISPLACEMENT	1,043 cm ³
POWER / TORQUE	105.0 kW / 111.0 N.m
TRANSMISSION	6-speed
CURB MASS	221 kg*
SEAT HEIGHT	815 mm

L x W x H	2,045 x 790 x 1,055 mm
FUEL CAPACITY	17 L
BRAKES (F)	Dual 310 mm petal discs
BRAKES (R)	Single 250 mm petal disc
TYRE (F)	120/70ZR17M/C (58W)
TYRE (R)	190/50ZR17M/C (73W)

Model Code: ZR1000H

SPORT

Z 900



Candy Lime Green with
Metallic Spark Black GN1

Pearl Robotic White with Metallic Matte Graphene Steel Gray WT2

EXCITE THE SENSES

The Z900 epitomises Kawasaki's belief of what the ideal supernaked should be. At 948cc with an ultra-lightweight chassis, every ride is met with exceptional power, responsiveness and excitement. Make your presence known on the streets with signature Sugomi-inspired styling and a commanding ride position.

RESPONSIVE FRONT & REAR SUSPENSION
STRONG & LIGHTWEIGHT TRELLIS FRAME
KTRC (KAWASAKI TRACTION CONTROL)
TFT COLOUR INSTRUMENTATION
SMART PHONE CONNECTIVITY
ALL LED LIGHTING

ENGINE TYPE	4-stroke, inline 4 cylinder
-------------	-----------------------------

DISPLACEMENT	948 cm ³
--------------	---------------------

POWER / TORQUE	92.2 kW / 98.6 N.m
----------------	--------------------

TRANSMISSION	6-speed
--------------	---------

CURB MASS	212 kg*
-----------	---------

SEAT HEIGHT	820 mm
-------------	--------

L x W x H	2,070 x 825 x 1,080 mm
-----------	------------------------

FUEL CAPACITY	17 L
---------------	------

BRAKES (F)	Dual 300 mm petal discs
------------	-------------------------

BRAKES (R)	Single 250 mm petal disc
------------	--------------------------

TYRE (F)	120/70ZR17M/C (58W)
----------	---------------------

TYRE (R)	180/55ZR17M/C (73W)
----------	---------------------

Model Code: ZR900F

 **Kawasaki**

RETRO SPORT

Z900RS



Candy Tone Blue BU1



Metallic Dark Green GN2

THE 1972 LEGEND RETURNS

There's no place for fake in the lifestyle you choose. Kawasaki alone has the heritage to deliver yesterday's values to today's riders in a truly authentic Modern Classic bike. The visceral spirit of a 1970s legend – Kawasaki's original king of cool Z1 – finds expression in the Z900RS, to satisfy the very essence of the rider you are now.

ICONIC TEARDROP TANK
ROUND LED HEADLAMP
BULLET SHAPED ANALOGUE DIALS
TUNED STAINLESS STEEL EXHAUST SYSTEM
ASSIST AND SLIPPER CLUTCH
KTRC (KAWASAKI TRACTION CONTROL)

ENGINE TYPE	4-stroke, in-line 4 cylinder
DISPLACEMENT	948 cm ³
POWER / TORQUE	82.0 kW / 98.5 N.m
TRANSMISSION	6-speed
CURB MASS	214 kg*
SEAT HEIGHT	835 mm

L x W x H	2,100 x 865 x 1,150 mm
FUEL CAPACITY	17 L
BRAKES (F)	Dual 300 mm discs
BRAKES (R)	Single 250 mm disc
TYRE (F)	120/70 ZR17M/C (58W)
TYRE (R)	180/55 ZR17 M/C (73W)

Model Code: ZR900C

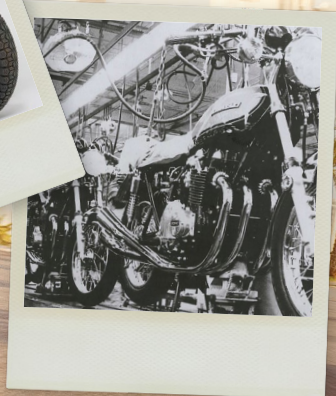
 **Kawasaki**



Z50th

1972-2022

#Z50thCelebration



RETRO SPORT

Z650RS

LAMS APPROVED

Kawasaki
LEARNER
APPROVED



Metallic Moondust Gray
with Ebony GY1

Candy Emerald Green GN1

A TRUE MIDDLEWEIGHT RETRO

Z650RS, a retro sport model that combines timeless good looks inherited from the Z900RS with a compact, easy-handling package that riders will love to enjoy daily. Flexible and approachable, the stylishly casual new Z650RS retro sport model is another exciting option for riders looking for a rich motorcycle life.

RELAXED RIDING POSITION
ASSIST & SLIPPER CLUTCH
ROUND LED HEADLIGHT
BULLET-SHAPED ANALOGUE DIALS
SLIM FUEL TANK
SPOKE-STYLE CAST WHEELS

ENGINE TYPE	4-Stroke parallel twin
DISPLACEMENT	649 cm ³
POWER / TORQUE	37.8 kW / 59.0 N.m
TRANSMISSION	6-speed
CURB MASS	186 kg*
SEAT HEIGHT	800 mm

L x W x H	2,065 x 800 x 1,115 mm
FUEL CAPACITY	12 L
BRAKES (F)	Dual semi-floating 300 mm discs
BRAKES (R)	Single 220 mm disc
TYRE (F)	120/70 ZR17M/C (58W)
TYRE (R)	160/60 ZR17M/C (69W)

Model Code: ER650M

 **Kawasaki**

Z650

LAMS APPROVED

Kawasaki
LEARNER
APPROVEDCandy Lime Green with
Metallic Spark Black GN1

Pearl Robotic White with Metallic Matte Graphene Steel Gray WT1

A LAMS BIKE THAT DELIVERS EXCITEMENT

Aggressive meets supernaked with this ideal blend of sporty performance and everyday versatility. Featuring next-level technology and a strong 649cc engine, the Z650 naked sportbike is a compact middleweight without equal.

TFT COLOUR INSTRUMENTATION

SMARTPHONE CONNECTIVITY

LIGHTWEIGHT TRELLIS FRAME

DUNLOP SPORTMAX ROADSPORT 2 TYRES

ASSIST AND SLIPPER CLUTCH

HORIZONTAL REAR BACK-LINK SUSPENSION

ENGINE TYPE	4-Stroke parallel Twin
DISPLACEMENT	649 cm ³
POWER / TORQUE	37.8 kW / 59.0 N.m
TRANSMISSION	6-speed
CURB MASS	187 kg*
SEAT HEIGHT	790 mm

L x W x H	2,055 x 765 x 1,065 mm
FUEL CAPACITY	15 L
BRAKES (F)	Dual 300 mm petal discs
BRAKES (R)	Single 220 mm petal disc
TYRE (F)	120/70 ZR17M/C (58W)
TYRE (R)	160/60 ZR17M/C (69W)

Model Code: ER650K

SPORT

Z 400

LAMS APPROVED

Kawasaki
LEARNER
APPROVED



Candy Lime Green with
Metallic Flat Spark Black GN1

Pearl Robotic White with Matte Graphene Steel Gray WT1

BUILT TO BE SEEN

A fierce, lightweight supernaked built for the streets. Taking cues from its Z brethren, the unmistakable streetfighter styling complements an aggressive attitude. The Z400 motorcycle was built to deliver light, predictable and natural handling for a confident riding experience. The upright riding position, low seat height and wide handlebar put the rider in the ideal position for active control, facilitating dynamic, sporty riding.

ASSIST AND SLIPPER CLUTCH

LIGHTWEIGHT CHASSIS

POSITIVE NEUTRAL FINDER

QUAD LED HEADLAMPS

AGILE AND PRECISE HANDLING

LOW SEAT HEIGHT

ENGINE TYPE	4-Stroke parallel Twin
DISPLACEMENT	399 cm ³
POWER / TORQUE	33.4 kW / 38.0 N.m
TRANSMISSION	6-speed, return
CURB MASS	167 kg*
SEAT HEIGHT	785 mm

L x W x H	1,990 x 800 x 1,055 mm
FUEL CAPACITY	14 L
BRAKES (F)	Single 310 mm petal disc
BRAKES (R)	Single 220 mm petal disc
TYRE (F)	110/70R17 M/C 54H
TYRE (R)	150/60R17 M/C 66H

Model Code: ER400D

 **Kawasaki**

TOURING

VERSYS 1000 S

*Optional Accessories - Top box and Panniers can be fitted together.



Metallic Graphite Gray with Metallic Diablo Black GY1

TAKE ON ANY ROAD, ANY TIME.

Kawasaki's Versys 1000 S is designed to offer maximum riding enjoyment across a wide variety of street riding situations. The relaxed, upright riding position offers a high level of machine control, and is complemented by a highly comfortable seat and good wind protection, making it easy to spend a long time in the saddle.

ASSIST AND SLIPPER CLUTCH
KTRC (KAWASAKI TRACTION CONTROL)
INTEGRATED RIDING MODES
KAWASAKI QUICK SHIFTER UP & DOWN
ELECTRONIC CRUISE CONTROL
SMARTPHONE CONNECTIVITY

ENGINE TYPE	4-stroke, inline 4 cylinder
DISPLACEMENT	1,043 cm ³
POWER / TORQUE	88.2 kW / 102.0 N.m
TRANSMISSION	6-speed
CURB MASS	255 kg*
SEAT HEIGHT	840 mm

L x W x H	2,270 x 950 x 1,490 mm
FUEL CAPACITY	21 L
BRAKES (F)	Dual 310 mm Petal Discs
BRAKES (R)	Single 250 mm Petal Disc
TYRE (F)	120/70 ZR17M/C (58W)
TYRE (R)	180/55 ZR17M/C (73W)

Model Code: KLZ1000E

 **Kawasaki**

TOURING

VERSYS® 650

LAMS APPROVED



Candy Lime Green with Metallic Flat Spark Black - GN1

VERSATILITY IS THE FOUNDATION OF THE VERSYS

Strong Versys family looks come by way of new styling inspired by the Versys 1000. Highlighted by new LED lighting, the modern, flowing design beckons invitingly, calling the rider to hit the open road for another adventure. In 2022 the Versys 650 is equipped with TRaction Control and a TFT Colour screen.

TFT COLOUR SCREEN

SMART PHONE CONNECTIVITY

ADJUSTABLE WINDSHIELD

ALL LED LIGHTING

TRACTION CONTROL (KTRC)

LARGE VOLUME FUEL TANK

ENGINE TYPE	4-Stroke parallel Twin
DISPLACEMENT	649 cm ³
POWER / TORQUE	41.3 kW / 56.0 N.m
TRANSMISSION	6-speed
CURB MASS	218 kg*
SEAT HEIGHT	845 mm

L x W x H	2,165 x 840 x 1,360 mm
FUEL CAPACITY	21 L
BRAKES (F)	Dual 300 mm petal discs
BRAKES (R)	Single 250 mm petal disc
TYRE (F)	120/70 ZR17M/C (58W)
TYRE (R)	160/60 ZR17M/C (69W)

Model Code: KLE650H

 **Kawasaki**

TOURING

VERSYS-X 300

LAMS APPROVED



Candy Lime Green with Metallic Flat Spark Black GN1

YOUR TICKET TO ADVENTURE

Kawasaki Versys-X 300 is a nimble-handling lightweight adventure motorcycle that is ready to take on any size adventure. Whether you're commuting or touring, the Versys-X 300 is a willing companion. With a lightweight chassis and long-travel suspension, the possibilities are endless.

LONG-TRAVEL SUSPENSION
UPRIGHT RIDING POSITION
LOW SEAT HEIGHT
CONVENIENT REAR CARRIER
ASSIST AND SLIPPER CLUTCH
ECONOMICAL RIDING INDICATOR

ENGINE TYPE	4-Stroke, Parallel twin
DISPLACEMENT	296 cm ³
POWER / TORQUE	29.3 kW / 25.7 N.m
TRANSMISSION	6-speed
CURB MASS	175 kg*
SEAT HEIGHT	815 mm

L x W x H	2,170 x 860 x 1,390 mm
FUEL CAPACITY	17 L
BRAKES (F)	Single 290 mm petal disc
BRAKES (R)	Single 220 mm petal disc
TYRE (F)	100/90-19M/C 57S
TYRE (R)	130/80-17M/C 65S

Model Code: KLE300C

 **Kawasaki**

CRUISER

Vulcan *S* CAFE

LAMS APPROVED

Kawasaki
LEARNER
APPROVED



Ebony with Pearl Robotic White BK1

SPORTBIKE PERFORMANCE MEETS CRUISER STYLE

Unlike any other, the Vulcan S Cafe is designed to transport riders into a sporty realm in edgy style. Blending an aggressive ride with a vintage styling and a powerful 649cc engine, this bike kicks any experience into high gear. Whether you're commuting to work or enjoying a day trip, the Vulcan S adds confidence-inspiring performance to every ride.

SPORTBIKE-DERIVED CHASSIS & SUSPENSION

DARK-TINTED WINDSHIELD DEFLECTOR

ADJUSTABLE RIDING POSITIONS

SPORTY HANDLING

LOW SINGLE SEAT

ASSIST AND SLIPPER CLUTCH

ENGINE TYPE	Liquid-cooled parallel twin
DISPLACEMENT	649 cm ³
POWER / TORQUE	35.0 kw / 53.0 N.m
TRANSMISSION	6-speed
CURB MASS	226 kg*
SEAT HEIGHT	705 mm

L x W x H	2,310 x 880 x 1,100 mm
FUEL CAPACITY	14 L
BRAKES (F)	Single 300 mm disc
BRAKES (R)	Single 250 mm disc
TYRE (F)	120/70 R18M/C 59H
TYRE (R)	160/60 R17M/C 69H

Model Code: EN650E

 **Kawasaki**

CRUISER

Vulcan S

LAMS APPROVED



Kawasaki
LEARNER
APPROVED



Vulcan S
Metallic Spark Black BK1

Vulcan S SE Pearl Robotic White WT1

STYLISH, URBAN MOTORCYCLE FOR ALL RIDERS

The Vulcan S is not your average cruiser. It stands apart, with its Parallel Twin engine, unique frame and suspension layout, and its very non-traditional looks. Accessible in all senses of the word, with the Vulcan S riders can come as they are, and just get on and go.

LOW SEAT HEIGHT
LIGHT HANDLING
ASSIST AND SLIPPER CLUTCH
NUMEROUS ACCESSORIES
FRONT AND REAR ABS
18" FRONT AND 17" REAR WHEELS

ENGINE TYPE	Liquid-cooled parallel twin
DISPLACEMENT	649 cm ³
POWER / TORQUE	35.0 kw / 53.0 N.m
TRANSMISSION	6-speed
CURB MASS	229 kg*
SEAT HEIGHT	705 mm

L x W x H	2,310 x 880 x 1,130 mm
FUEL CAPACITY	14 L
BRAKES (F)	Single 300 mm disc
BRAKES (R)	Single 250 mm disc
TYRE (F)	120/70 R18M/C 59H
TYRE (R)	160/60 R17M/C 69H

Model Code: EN650D

 **Kawasaki**

CRUISER

Vulcan S

FULL POWER



Metallic Spark Black BK1

SPORTBIKE PERFORMANCE MEETS CRUISER STYLE

The Vulcan S is not your average cruiser. It stands apart, with its Parallel Twin engine, unique frame and suspension layout, and its very non-traditional looks. Accessible in all senses of the word, with the Vulcan S riders can come as they are, and just get on and go.

LOW SEAT HEIGHT

LIGHT HANDLING

ASSIST AND SLIPPER CLUTCH

NUMEROUS ACCESSORIES

FRONT AND REAR ABS

18" FRONT AND 17" REAR WHEELS

ENGINE TYPE	Liquid-cooled parallel twin
DISPLACEMENT	649 cm ³
POWER / TORQUE	45.0 kW / 63.0 N.m
TRANSMISSION	6-speed
CURB MASS	226 kg*
SEAT HEIGHT	705 mm

L x W x H	2,310 x 880 x 1,100 mm
FUEL CAPACITY	14 L
BRAKES (F)	Single 300 mm disc
BRAKES (R)	Single 250 mm disc
TYRE (F)	120/70 R18M/C 59H
TYRE (R)	160/60 R17M/C 69H

Model Code: EN650D

 **Kawasaki**

RETRO STYLE

W800 STREET



Ebony with Metallic Matte Graphene Steel Gray BK1

THE ORIGINAL ICON

The 1960s spirit runs deep in the Kawasaki W retro-classic lineup with class-leading authentic styling, sound and feel. A true throwback to the iconic W1, modern W800 motorcycles are meticulously crafted to pay homage to the past, all while thoughtfully incorporating modern technology and features.

ASSIST & SLIPPER CLUTCH

TRADITIONAL EXHAUST SYSTEM

CHROME-PLATED STEEL FENDERS

LARGE ROUND TURN SIGNALS

LARGE 19" FRONT AND 18" REAR WHEELS

SILVER ALUMITE RIMS

ENGINE TYPE	Air Cooled Vertical Twin 4-Stroke
DISPLACEMENT	773 cm ³
POWER / TORQUE	35.0 kW / 62.9 N.m
TRANSMISSION	5-speed
CURB MASS	223 kg*
SEAT HEIGHT	770 mm

L x W x H	2,135 x 925 x 1,120 mm
FUEL CAPACITY	15 L
BRAKES (F)	Single 320 mm Disc
BRAKES (R)	Single 270 mm Disc
TYRE (F)	100/90-18M/C 56H
TYRE (R)	130/80-18M/C 66H

Model Code: EJ800B

 **Kawasaki**

DUAL PURPOSE

KLR650

LAMS APPROVED

Kawasaki
LEARNER
APPROVED



KLR650
Pearl Sand Khaki GN1
Model Code: KL650F

KLR650 Adventure Cypher Camo Gray GY2 | Model Code: KL650H

OFF ROAD TOURING

Go-farther (further) adventure partner now tougher, More reliable, More comfortable. While retaining the highly-acclaimed reliability of its predecessor, the new KLR650 elevates its touring potential to the next level. Frame revisions improve handling character, rubber mounts add to rider comfort matched with increased comfort and greater carrying capacity facilitate long-distance touring or short distance errands.

LARGE FRONT DISC WITH ABS

FUEL INJECTED

LED HEADLIGHT

EXCLUSIVE PANNIER & TOP CASE ACCESSORIES

MAINTENANCE FREE BATTERY

23 LITRE FUEL TANK

ENGINE TYPE	Liquid-cooled, 4-stroke Single
DISPLACEMENT	652 cm ³
POWER / TORQUE	28.5 kW / 51.5 N.m
TRANSMISSION	5-speed
CURB MASS	210 kg* (KLR650) 222 kg* (KLR650 Adventure)
SEAT HEIGHT	870 mm

L x W x H	2,280 x 970 x 1,465 mm (KLR650) 2,280 x 970 x 1,455 mm (KLR650 Adventure)
FUEL CAPACITY	23 L
BRAKES (F)	Single 300 mm Disc
BRAKES (R)	Single 240 mm Disc
TYRE (F)	90/90-21M/C 54S
TYRE (R)	130/80-17M/C 65S



Kawasaki

Let the good times roll

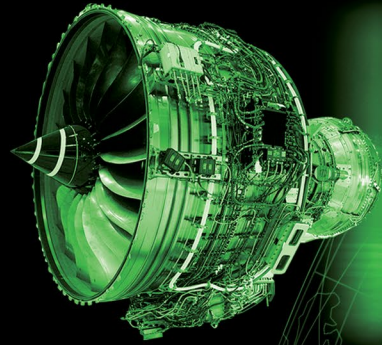
‘Global Kawasaki’

Kawasaki Group Mission Statement

**Kawasaki, working as one
for the good of the planet**

We are the Kawasaki Group, a global technology leader with diverse integrated strengths. We create new value - for a better environment and a brighter future for generations to come.

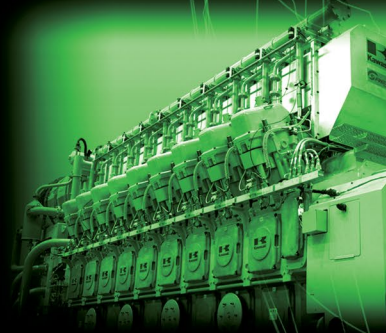
Aerospace



Rolling Stock



Energy Facilities





Ships & Offshore Structures



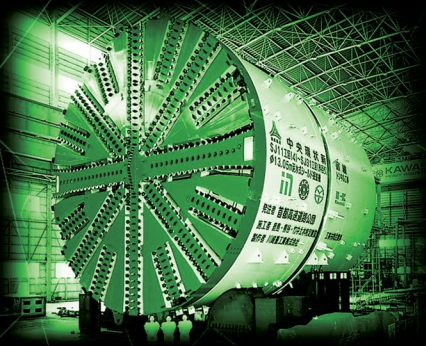
Industrial Robots



Environmental & Recycling Plants



Infrastructure





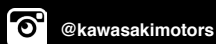
2022 MOTORCYCLE RANGE



FOR FULL SPECIFICATIONS PLUS THE LATEST KAWASAKI MOTORCYCLES, NEWS AND DEALER INFORMATION GO TO WWW.KAWASAKI.COM.AU

*Curb mass includes full tank of fuel and all liquids at optimum levels. All information was correct at the time of printing. Some specifications may be subject to change. Refer to website www.kawasaki.com.au for further information. Kawasaki accepts no responsibility for unavailability of stock or changes to specifications. Some photography depicts international models. Some models featured may be fitted with options or accessories. Colours, graphics and features may vary slightly from those shown. Photographs depict professional riders under controlled conditions. Kawasaki Motors Pty Ltd endorses safe riding. Always wear an approved helmet and protective riding clothing. Never ride a motorcycle under the influence of alcohol or drugs.

JOIN KAWASAKI TEAM GREEN AUSTRALIA AT: WWW.KAWASAKI.COM.AU/EN-AU/TEAMGREEN



Kawasaki
Motors Finance

Kawasaki
Insurances

Kawasaki
GENUINE ACCESSORIES